



AIRPORT BEACON

A publication of  Muskegon County Airport

From the Airport Manager

Submitted by Marty Piette



Wow! Three years in a row! For the third consecutive year, Muskegon County Airport passed its annual FAR Part 139 Certification Inspection with no discrepancies. The inspection is an exhaustive three-day assessment of the Airport's overall operation and procedures related to: snow and ice control, airfield safety and maintenance, airfield condition reporting, discrepancy reporting, airfield vehicle operations, aircraft rescue and fire fighting, aircraft fueling, construction project management, and many other areas of airport operations. Until the last three years, MKG had never received a 'Zero Discrepancy' report. Congratulations to everyone involved in this year's inspection. Keep up the great work, and thank you for making travel at MKG safe.

Business Profile

Submitted by Dianne Hoofman

Our business spotlight is on E-Coaters of West Michigan, located in the Airport Business Park. Metal products are coated with a high gloss finish to prevent corrosion and provides humidity resistance. This proven process coats hard to reach areas and provides uniform paint thickness for many applications. Industries served include automotive, furniture, and appliance.

E-Coaters features a state-of-the art electro-deposition coating system with fast turnaround. Personal service from owner/manager David Ervall ensures the utmost in customer satisfaction.

E-Coaters has been serving West Michigan for 11 years and employs 40 people. Competitive quotes can be obtained by contacting David at dervall@e-coaters.com.



More information found at:

www.travel.state.gov/passport/
www.dhs.gov/xtrvlsec/crossingborders/

Need A Passport?



Where to go. To get a passport for the first time, applicants must go to a passport office and bring proof of U.S. citizenship (birth certificate with raised seal), two passport photos and a valid form of photo identification, such as a driver's license. (See green box below to find a passport office near you.)

Who needs a passport? All citizens of the United States, including children, are now required to present a valid passport when reentering the United States at any airport.

Applications. Applications for passports can be downloaded from www.travel.state.gov/passport/. The status of submitted applications can also be found on this website.

What are the costs? Age 16 and older, the passport application fee is \$67 and the execution fee is \$30, for a total of \$97. For under age 16, the passport application fee is \$52 and the execution fee is \$30, for a total of \$82.

Processing. Passports are generally processed within six to eight weeks, although for an additional fee, the process can be expedited to three weeks.

Passport Acceptance Facilities

Facility Name	Phone
City of Muskegon	(231) 724-6705
Muskegon Post Office	(231) 722-7292
Spring Lake Post Office	(616) 842-0321
Fruitport Center Post Office	(231) 865-3675
County Clerk (Muskegon Co.)	(231) 724-6221
Grand Haven Post Office	(616) 842-0510
Ottawa County Clerk	(616) 846-8372
Fruitland Township	(231) 766-3208
Whitehall Post Office	(231) 894-4553
Coopersville Post Office	(616) 837-7383

AIRPORT BEACON

Leaders See Muskegon A Terminal of Skyways

By WILLIAM A. MAY,
Muskegon Chronicle Picture Editor

The Port City of yesterday . . . Terminal of the Skyways tomorrow . . .

This is the vision of community leaders who believe Muskegon's industrial and business prosperity depends upon airline transportation during the atomic age which the world is entering. The airplane - they are convinced - will give to Muskegon the link it has always needed . . . fast, direct transportation to and from other industrial cities of the nation. If Muskegon fails to establish itself as an air terminal - these men believe - its industrial life will ebb away.

Knowing the mountain will not come to Mohammed they are going to fight against any possible failure of Muskegon to go to aeronautics. One of the first projects in the minds of leaders who envisage a greater Muskegon is the construction of a \$1,000,000 airport.

A master plan for development of Muskegon County Airport into a Class IV field (the highest rating) calls for its expansion to one-mile square, or 640 acres. The present airport, acquired and developed in 1928, contains 271 acres.

Under a joint arrangement made by the Board of Supervisors, Muskegon County Airport Trustees, and the Greater Muskegon Chamber of Commerce, a five-year airport expansion program was agreed upon. The chamber agreed to raise \$30,000 to finance the purchase of 80 to 90 acres of land immediately needed to lengthen certain runways. The county agreed to match \$20,000 obtained from the state with \$20,000 of county funds, for construction of runways and lighting facilities.

Negotiations for purchase of these lands are in progress.

A second and supplementary campaign was scheduled for 1947. However, the tremendous increase in air travel and Pennsylvania-Central Airlines' purchase of new and larger ships for its main line operation convinces county and chamber leaders there is need for accelerating the program.

The chamber has opened a new drive for \$40,000 for purchase of lands. Federal and state assistance, the group believes, will largely finance the airport's development and possibly construction of the proposed \$250,000 administration building.

The chamber points to the city's railroad situation as argument for quick progress here in aviation.

"Muskegon faced a crisis in the 1880s in respect to rail service," said John C. Beukema, manager of the chamber. "It did not press for a lakeshore rail line from Traverse City and Petoskey to Chicago; it let the main line go to the interior. There has never been a day since that we have not paid a price for that short-sightedness."

"We must not make the same mistake in respect to air travel," he said. "Air travel has almost overnight jumped out of the pioneering stage. It has become a main agency of transportation. To retain our supremacy as an industrial community, we 'must' have adequate transportation facilities."

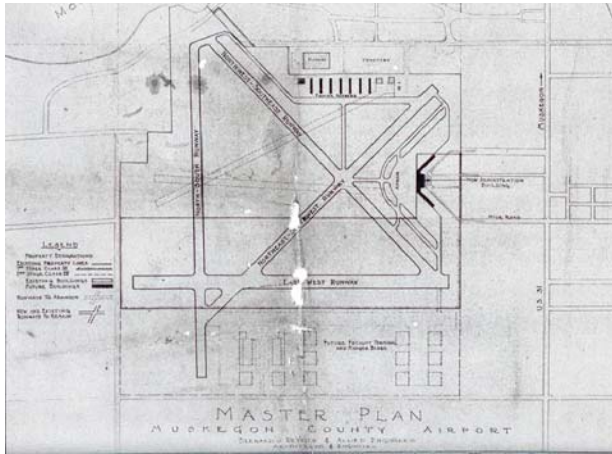
"We can not grow and progress without these facilities," he said. "Air travel is today's answer."

Air travel in and out of Muskegon is increasing at a rapid rate. A few years ago Pennsylvania-Central Airlines was servicing 200 or 300 passengers a month in and out of Muskegon. August statistics show there were 2,574 outbound passengers, 4,908 pounds of mail, and 6,258 pounds of express.

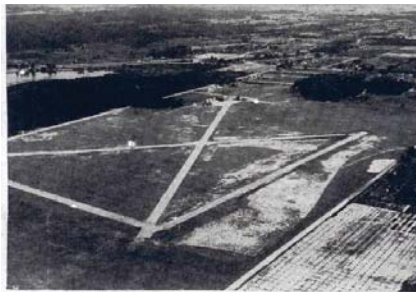
(Reprinted by Permission of the Muskegon Chronicle)

MKG History

Taken from a "Muskegon Chronicle" article dated October 13, 1945. Pictures and article submitted by Ken Price, Executive Air Transport.



PRESENT MUSKEGON COUNTY AIRPORT, containing 271 acres with runways 2,485 up to 3,590 feet in length, is a Class II field. Airport trustees and the Greater Muskegon Chamber of Commerce seek to enlarge the field into a Class IV field (highest rating) by adding 369 acres of land south of Hile road, shown in lower right corner of photograph. - (Radium Photo Service aerial)



PENNSYLVANIA CENTRAL AIRLINES' twin-engined DC-3s have many times been unable to stop at Muskegon because of the size and inadequate lighting of the airport. These two were grounded by fog. In the projected \$1,000,000 development of the airport, huge four-motored DC-4s would be enabled to make instrument landings on mile-long runways regardless of weather conditions. - (Chronicle Staff photo)

Employee Spotlight



Our employee spotlight this quarter is on Kevin Straley, Manager of Midwest Airlines. Kevin has airline experience dating back to 1981 when he started working for airport security while going to college in Traverse City.

Back in the day, airlines would come and go. Kevin, however, was always hired to stay on with the next replacement. First Midstate, then Chicago Air, then Midway Airlines, which eventually

brought him to Muskegon. With Associate Degrees in Electronics Engineering and Business, Management & Marketing, he landed a managerial position with Midwest Airlines.

He likes Midwest because of how they treat their employees and their customers. "Midwest is admired system wide. Customer service is above and beyond anything I have ever seen."

Kevin has 5 children ranging in age from 11-22 years. "All my weekends are spent with my kids. We go to horse shows, camp, hike, fish and hunt. I'm having way too much fun!"

Want to know what else is fun? The fact that last month Kevin and his team once again had zero mishandles on baggage performance. I think that means a free lunch for the employees! Thanks "Team Midwest" and thanks to Kevin for running a top notch station.

Congratulations!

TSA Muskegon Team celebrated their 5th anniversary at Muskegon County Airport with a luncheon at the Airport on August 1.

Muskegon County Airport employees are committed to the community. The Airport is the only County department to have 100% of their employees donate to the County's 2007 United Way campaign. Thank you also to The Brownstone, Executive Air Transport, and Prestige Landscape for your donations to our on-line auction.

Employee of the Month

August 07Michele Peleras, NW
September 07..... Sherri Knoll TSA
October 07..... Kathy Sluyter, Airport

Airport Contact Info

Airport Administration
231-798-4596, x-220

Airport Maintenance
231-798-4596, x-227

Air Travel Marketing Consultant
231-798-4596, x-262

Northwest Airlines
800-225-2525

Midwest Airlines
800-452-2022

AIRPORT BEACON

Fourth Quarter

3

2007

Runway 14/32 Shift and Extension

Submitted by Marty Piette

Phase II of the runway 14/32 shift/extension project is underway. Work began on Phase II the first week of August. Construction activities for this year will be wrapping up by the time of this printing, with runways 14/32 and 18/36 reopening by the end of October. All runways and taxiways will reopen in the same configuration as before the work began. Because of the late start this year, not all the Phase II work could be completed before winter, so Phase II is being divided into two parts. Part 1 was, essentially, clearing and grading to make way for Part 2. Part 2 will start approximately April 2008, which will include finishing the runway and taxiway paving and relocation of the ILS. The new runway, at its new length, will then open approximately June 2008. Then, in July or August of 2008, Phase III of the project will take place. Phase III includes mill and overlay of 14/32 and various taxiway connectors. As always, the timing and scope of any project is dependent upon many factors (primarily funding), so project scope and timing are subject to change.



(Photos Courtesy of Ken Price)



AIRPORT BEACON

A publication of  Muskegon County Airport

Fourth Quarter

4

2007

Transportation Committee

Bill Gill, Chair
Roger Wade, Vice Chair
P. Don Aley
Charles L. Buzzell
Lew Collins
James J. Derezinski
Marvin R. Engle
Kenneth Mahoney
Louis A. McMurray
Robert Scolnik
I. John Snider II

Questions, Comments, Suggestions?

Submit to:

Muskegon County Airport
99 Sinclair Drive
Muskegon, MI 49441
Phone: 231-798-4596, Fax: 231-798-7728
homanpa@co.muskegon.mi.us

Holiday Travel Tips

Taken from the Transportation Security Administration (TSA) website <http://www.tsa.gov/311/311-holiday.shtm>

TSA's 3-1-1 program means:

- Liquids, aerosols and gels must be in containers three ounces or less,
- Items must be put in a one quart, clear plastic zip-top bag, and
- Only one zip-top bag per passenger.

(The 3-1-1 program applies to Carry-On baggage only.)



Apply 3-1-1 to gifts. 3-1-1 isn't just about shampoo and toothpaste. Food items such as jams, salsas, sauces, syrups and dips will not be allowed through the checkpoint unless they are in containers three ounces or less and in the passenger's one quart zip-top bag. This applies to gift items including lotions, creams, scented oil, liquid soaps, perfumes, and even snow globes, that are in excess of three ounces -- even if they are in sealed gift packs.

Do not wrap gifts. If a security officer needs to inspect a package they may have to unwrap your gift. Please wrap gifts after arriving at your destination.

Arrive on time. Check with your carrier for suggested arrival times. You must have a boarding pass and valid government photo ID to enter the security checkpoint. Give yourself adequate time to check your baggage and move through security.

Dress the part. Metal in your clothing may set off the walk-through metal detector. Pack coins, keys, jewelry, belt buckles and other metal items in your carry-on bag. Shoes must be removed and screened by TSA, so wear shoes you can easily take on and off to speed the process.



99 Sinclair Drive
Muskegon, MI 49441

Phone: 231-798-4596
Fax: 231-798-7728
www.muskegonairport.com

